

OPTIONAL TREATMENTS

FIBREGLASS REINFORCEMENT

Where greater resistance to impact, abrasion or steam cleaning is required, two fibreglass reinforcement options can be incorporated into our wall coating systems.

Standard light fibreglass reinforcement (FG Light)

This is a lightweight fibreglass tissue (50 g/sqm), applied in a single layer. It offers improved impact resistance when combined with standard C/S coatings and is particularly useful where the existing wall surface may incorporate old minor cracking or unevenness.

Standard light fibreglass tissue is suitable for use with Wallsheen, Wallflex and Armourglaze

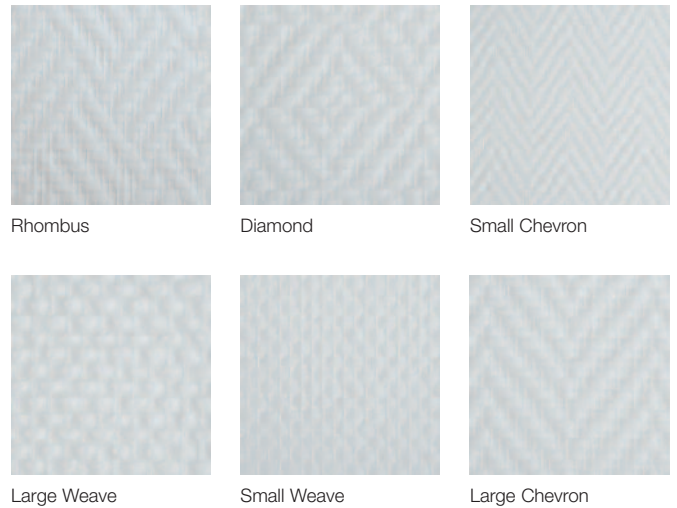
Heavy fibreglass reinforcement (FG Heavy)

This is a dual gauge fibreglass system, comprising of a heavy duty chop strand mat (150 g/sqm) and a lightweight fibreglass tissue (50 g/sqm). This option provides the ultimate in impact resistance and durability within a coating system. In many cases it also allows direct coating over heavily cracked and uneven wall surfaces, without the need for raking out, filling etc.

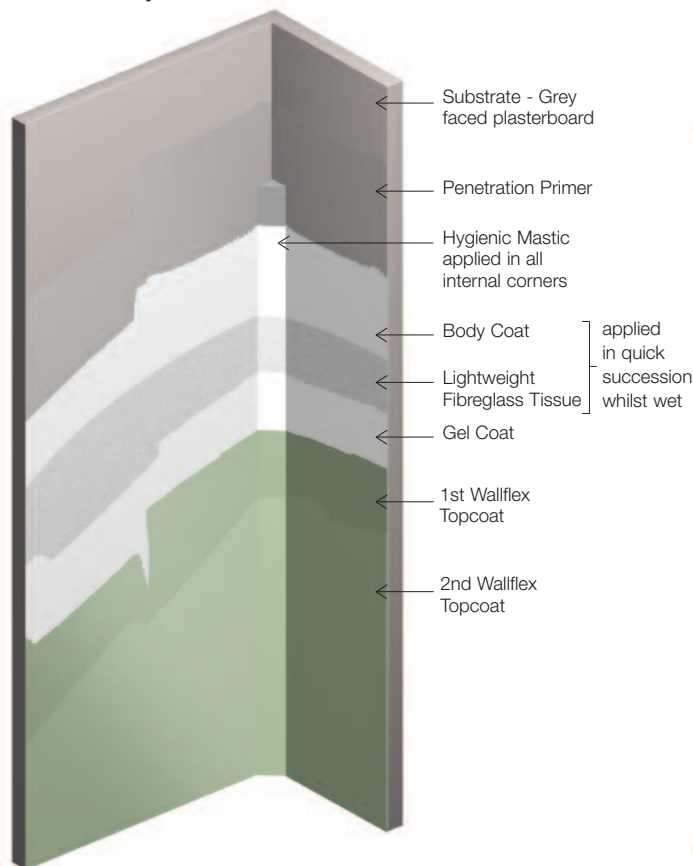
FG Heavy can be specified as an option with Wallflex and Armourglaze.

DECORATIVE FIBREGLASS PATTERNS

Six decorative patterns in light fibreglass tissue are available for use with Wallsheen system only.



Example: FG Light application with C/S Wallflex system



Example: FG Heavy application with C/S Armourglaze system

